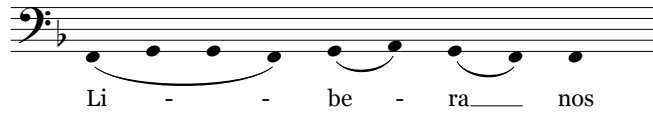


Libera nos [II]



John Sheppard
(c.1515-1558)

Superius [Alto I]
Medius [Alto II]
Contratenor [Tenor I]
Quintus [Tenor II]
Tenor [Baritone I]
Sexta pars [Baritone II]
Bassus [Bass]

4

nos, iu - sti -

8

iu - sti - fi - ca nos, O

iu - sti - fi - ca nos,

nos, iu - sti - fi - ca

ca nos, iu - sti - fi - ca

nos, iu - sti - fi - ca

ca nos, iu - sti - fi - ca

fi - - - ca nos,

Detailed description: This block contains the musical notation for measures 8 through 11. It features a choir with four vocal parts (Soprano, Alto, Tenor, Bass) and a basso continuo line. The lyrics are 'iu - sti - fi - ca nos, O' in measure 8, 'iu - sti - fi - ca nos,' in measure 9, 'nos, iu - sti - fi - ca' in measure 10, and 'ca nos, iu - sti - fi - ca' in measure 11. The music is in a minor key with a common time signature. The vocal parts have various melodic lines, some with ties across measures. The basso continuo line provides a harmonic foundation with sustained notes and some movement.

12

be - a - ta Tri - ni - - - tas,

O be - a - ta Tri - ni - -

nos, iu - sti - fi - ca nos, O

nos, iu - sti - fi - ca

nos, O be - a - ta Tri - ni - - -

iu - sti - fi - ca nos, O be -

O be - a - - - -

Detailed description: This block contains the musical notation for measures 12 through 15. It continues the choir and basso continuo parts. The lyrics are 'be - a - ta Tri - ni - - - tas,' in measure 12, 'O be - a - ta Tri - ni - -' in measure 13, 'nos, iu - sti - fi - ca nos, O' in measure 14, and 'nos, iu - sti - fi - ca' in measure 15. The music maintains the same key and time signature. The vocal parts show more complex phrasing, with some notes tied across measures. The basso continuo line continues to support the harmony with sustained and moving lines.

20

- - - - - tas, O be - a - ta Tri - ni - tas.
 O be - a - ta Tri - ni - tas.
 Tri - ni - tas, O be - a - ta Tri - ni - tas.
 - be - a - ta Tri - ni - tas.
 - - - - - tas.
 tas, O - be - a - ta Tri - ni - tas.
 ta Tri - ni - tas.